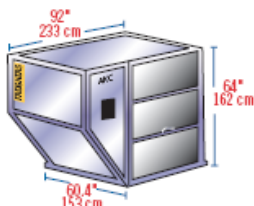


Air Freight Container Types and Dimensions

The following guide to airfreight containers, also called Unit Load Devices (ULD), has been developed from materials supplied by IATA (International Air Transport Association) and the ATA (Air Transport Association of America). This guide lists and illustrates the average external dimensions and weight limitations of the primary containers in use today. Exact dimensions and weight limitations will vary by manufacturer and availability will vary by air carrier and tradelane.

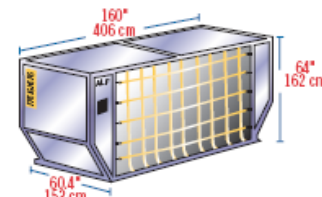
LD-1

IATA ULD Code: ANC Contoured Container
Also known as: AVC, AVD, AVK, AVJ
Forkable: AVY
Classification: LD-1
Rate Class: Type 8
Suitable for: B747, B767, B777, MD-11
Internal volume: 4.8 cu. m (169.5 cu. ft)
Maximum gross weight: 1588 kg (3501 lb)



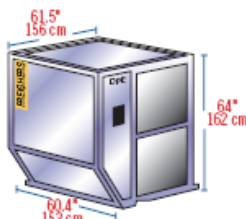
LD-6

IATA ULD Code: ALF Contoured Container
Also known as: AWD, AWF
Forkable: AWC
Classification: LD-6
Rate Class: Type 6W
Suitable for: A300, A310, A330, A340, B747, B777, DC-10, MD-11, L1011
Internal volume: 8.9 cu. m (314 cu. ft)
Maximum gross weight: 3175 kg (7000 lb)



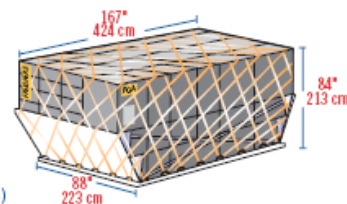
LD-2

IATA ULD Code: DPE Contoured Container
Also known as: APA, DPA
Forkable: DPN
Classification: LD-2
Rate Class: Type 8D
Suitable for: B767
Internal volume: 3.4 cu.m (120 cu. ft)
Maximum gross weight: 1225 kg (2700 lb)



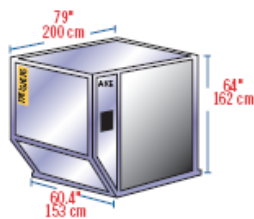
LD-7

IATA ULD Code: XAW PIP Pallet with fixed angle wings and net
Classification: LD-7
Rate Class: Type 5
Suitable for: Wide body: All aircraft
Maximum volume with overhang: 14.0 cu. m (494 cu. ft)
Maximum gross weight: 5000 kg (11023 lb)



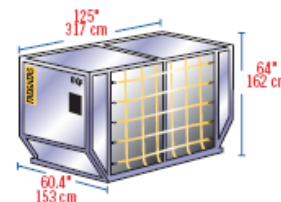
LD-3

IATA ULD Code: AKE Contoured Container
Also known as: AKE, AVA, AVB, AVC, AVK, DVA, DVE, DVP, XKS, XKG
Forkable: AKN, AVN, DKN, DVN, XKN
Classification: LD-3
Rate Class: Type 8
Suitable for: A300, A310, A330, A340, B747, B767, B777, DC-10, MD-11, L1011
Internal volume: 4.3 cu. m (152 cu. ft)
Maximum gross weight: 1588 kg (3500 lb)



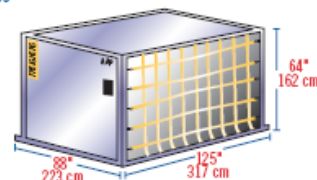
LD-8

IATA ULD Code: DQF
Also known as: ALE, ALN, DLE, DLF, DQP, MQP
Classification: LD-8
Rate Class: Type 6A
Suitable for: B767
Internal volume: 6.85 cu. m (242 cu. ft)
Maximum gross weight: 2450 kg (5401 lb)



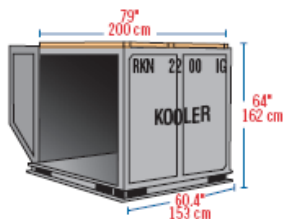
LD-9

IATA ULD Code: AAP Enclosed Pallet on PIP base
Also known as: AA2, XAG, XAV
Classification: LD-9
Rate Class: Type 5
Suitable for: A300, A310, A330, A340, B747, B767, DC-10, MD-11, L1011
Internal volume: 9.1 cu. m (321 cu. ft)
Maximum gross weight: 4624 kg (10194 lb) lower deck
6000 kg (13227 lb) main deck



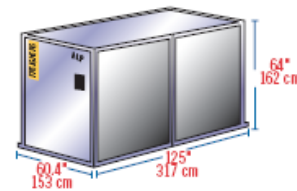
Insulated LD-3

IATA ULD Code: RKN
Classification: LD-3
Rate Class: Type 8
Suitable for: A300, A310, A330, A340, B747, B767, B777, DC-10, MD11, L1011
Internal volume: 3.0 cu.m (109 cu. ft)
Maximum gross weight: 1588 kg (3500 lb)
Temperature Control Range: -20C to +20C



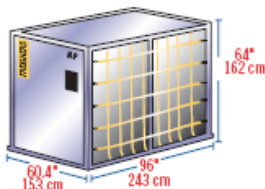
LD-11

IATA ULD Code: ALP Rectangular Container
Also known as: ALD, AW2, AWB, AWD, AWZ, DLP, DWB, MNB
Refrigerated version: RWB, RWD, RWZ
Classification: LD-11
Rate Class: Type 6
Suitable for: A300, A310, A330, A340, B747, B777, DC-10, MD-11, L1011
Internal volume: 7.2 cu. m (253 cu. ft)
Maximum gross weight: 3176 kg (7002 lb)



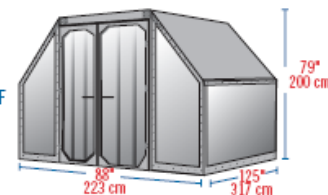
LD-4

IATA ULD Code: ALP Rectangular Container
Also known as: ALD, AWD, AWZ, DLP
Forkable: ALB, ALC, AWB, AWC
Classification: LD-4
Rate Class: Type 8
Suitable for: B767, B777
Internal volume: 5.7cu. m (201 cu. ft)
Maximum gross weight: 2449 kg (5399 lb)



A-2

IATA ULD Code: DAA
Classification: A-2
Suitable for: B747, B747F, DC8, DC10, A300/F
Internal volume: 12.6 cu. m (444 cu. ft)
Maximum gross weight: 6033 kg (13300 lb)

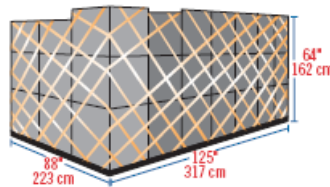


Air Freight Container Types and Dimensions

The following guide to airfreight containers, also called Unit Load Devices (ULD), has been developed from materials supplied by IATA (International Air Transport Association) and the ATA (Air Transport Association of America). This guide lists and illustrates the average external dimensions and weight limitations of the primary containers in use today. Exact dimensions and weight limitations will vary by manufacturer and availability will vary by air carrier and tradelane.

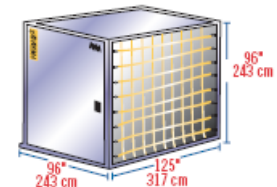
88" PALLET

IATA ULD Code: PIP
Classification: 88" Pallet with net
Suitable for: B747, B767, B777, DC-10
Maximum volume: 11.9 cu. m. (420 cu. ft.)
Maximum gross weight: 747/DC-10: 6033 kg (13300 lb)
767: 5103 kg (11227 lb)
777/DC-10: 4626 kg (10501 lb)
Can be loaded to 96" (162 cm) and 118" (300 cm) on freighters



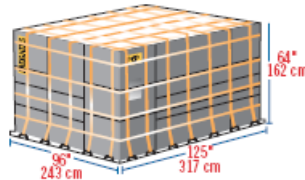
AQ6

IATA ULD Code: AMA Rectangular Container on P6P Base
Also known as: AMF, AMG, AMK, AMP, AQA, AQD, AQ6
Classification: M-1
Rate Class: Type 2
Suitable for: B747F, B747Combi
Internal volume: 17.5 cu. m (618 cu. ft.)
Maximum gross weight: 6804 kg (15000 lb)



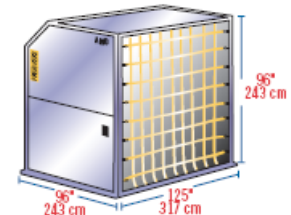
96" PALLET

IATA ULD Code: P6P 10ft flat pallet with net
Also known as: PGA, P6C, P6Q, PMA, FMC, PMP, PQP
Classification: LD-9
Rate Class: Type 2BG
Suitable for: A300, A310, A330, A340, B747, B767, B777, DC-10, MD-11, L1011
Maximum volume: 21.2 cu. m (747 cu. ft.)
Maximum gross weight: 6,804 kg (15000 lb)
Can be loaded to 96" (162 cm) and 118" (300 cm) on freighters



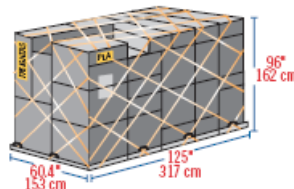
AQ7

IATA ULD Code: AMD Contoured Container on P6P Base
Also known as: AQA, AQ7
Classification: M1H
Rate Class: Type 2H
Suitable for: B747F, B747Combi
Internal volume: 19.9 cu. m (702 cu. ft.)
Maximum gross weight: 6800 kg (14991 lb)



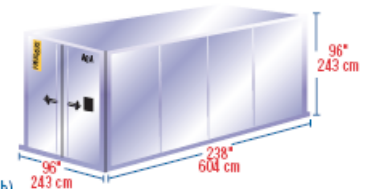
HALF PALLET

IATA ULD Code: PLA half pallet with net
Also known as: PLB, FLA, P9A, P9B, P9P, P9R, P9S
Classification: HP
Rate Class: Type 6
Suitable for: Lower deck: B747, B777
Main deck: B707F, B727F, B737F
Maximum volume: 7.2 cu. m (254 cu. ft.)
Maximum gross weight: 3175 kg (6999 lb)



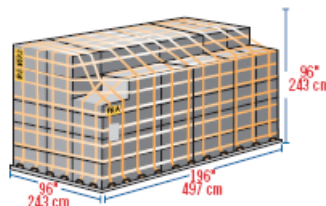
M-6

IATA ULD Code: AGA 20ft Box Container
Also known as: ASE
Classification: M-6
Rate Class: Type 1
Suitable for: B747F, B747Combi
Internal volume: 33.0 cu. m (1165 cu. ft.)
Maximum gross weight: 11340 kg (25000 lb)



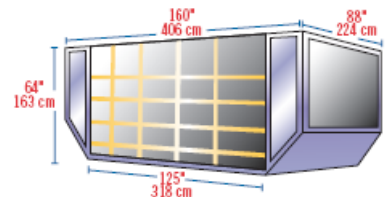
16 FT PALLET

IATA ULD Code: PRA 16ft flat pallet with net
Also known as: PMA, P4A, P4M, PZA
Classification: MDP
Rate Class: Type 1P
Suitable for: B747, B747Combi
Maximum volume: 26.8 cu. m (946 cu. ft.)
Maximum gross weight: 11300 kg (24991 lb)



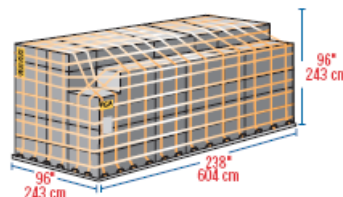
LD-26

IATA ULD Code AAF
Classification: LD-26
Suitable for: B747, B777, DC-10
Maximum gross weight:
747/DC-10: 6033 kg (13300 lb)
777/DC-10: 4626 kg (10501 lb)



20 FT PALLET

IATA ULD Code: PGA 20ft flat pallet with net
Also known as: PGE, PGF, PSA, PSG, P7A, P7E, P7F, P7G
Classification: M-6
Rate Class: Type 1
Suitable for: B747F, B747Combi
Maximum volume: 33.2 cu. m (1174 cu. ft.)
Maximum gross weight: 11340 kg (25000 lb)



LD-29

IATA ULD Code: AAU Contoured Container on PIP base
Classification: LD-29
Rate Class: Type 5
Suitable for: B747
Internal volume: 14.2 cu. m (501 cu. ft.)
Maximum gross weight: 6033 kg (13300 lb)

